

**MANUFACTURING PRODUCTION, AUSTRALIA
MAY 1994, PRELIMINARY**

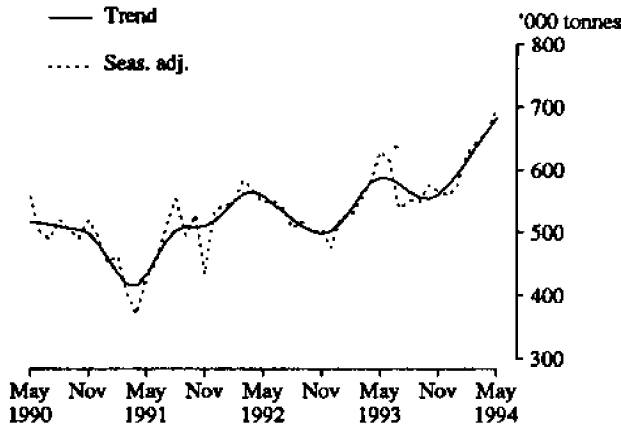
NOTES

This publication presents preliminary monthly estimates for selected major indicators of manufacturing production for Australia. The statistics are collected from all the relevant manufacturing establishments other than single establishment manufacturing enterprises with fewer than four persons employed and are part of a much broader range of items published quarterly. For details of these see "Related publications", in the Explanatory Notes at the back of this publication. The next issue will be released on 26 July 1994.

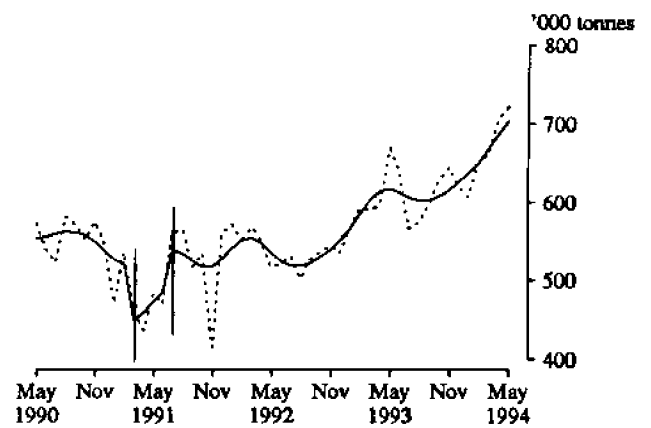
IAN CASTLES
Australian Statistician

PRODUCTION STATISTICS, AUSTRALIA : TRENDS

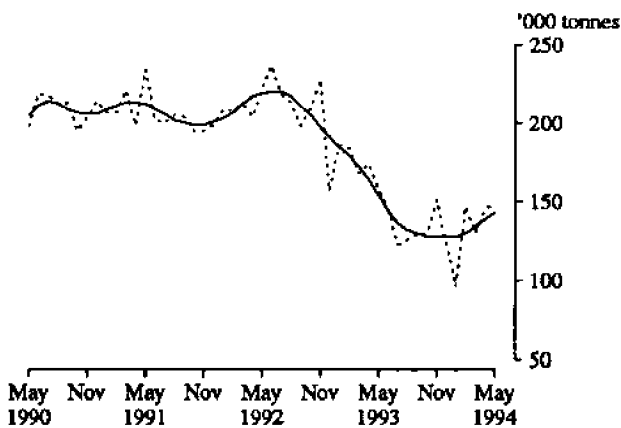
1. BASIC IRON



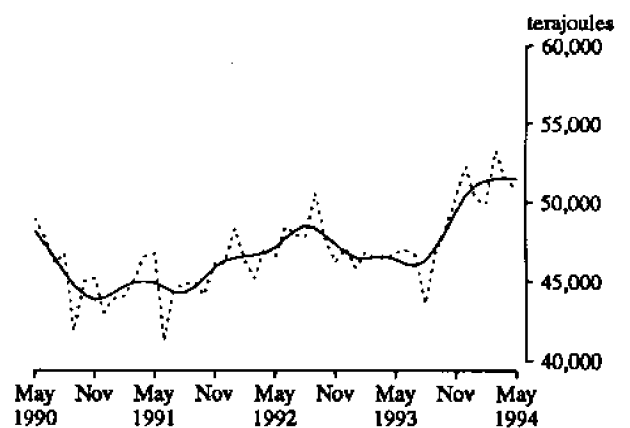
2. IRON AND STEEL IN PRIMARY FORMS(a)(b)



3. BLOOMS AND SLABS



4. GAS



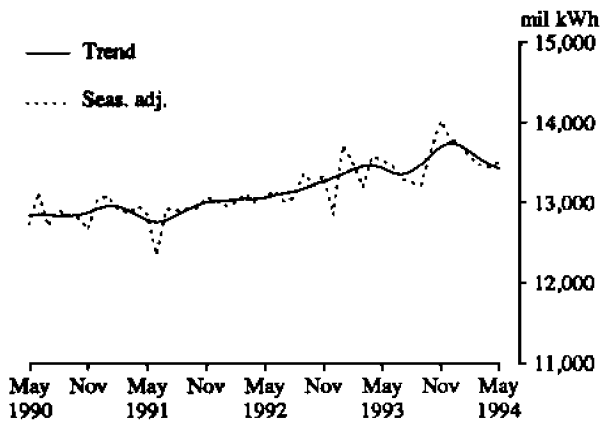
For footnotes see end of graph.

INQUIRIES

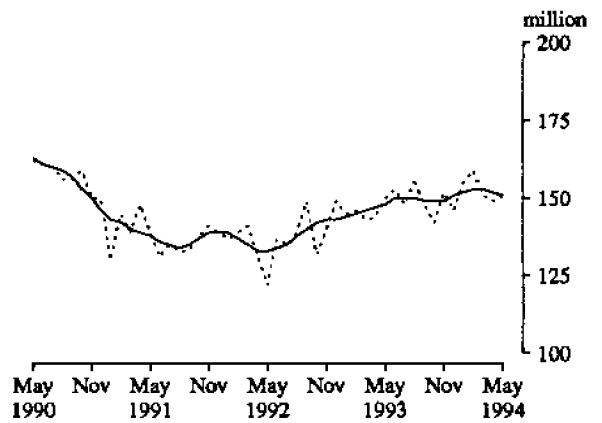
- for further information about statistics in this publication and the availability of related unpublished statistics, contact Rod Smith on Melbourne (03) 615 7635 or any ABS office.
- for information about other ABS statistics and services please refer to the back page of this publication.

PRODUCTION STATISTICS, AUSTRALIA : TRENDS

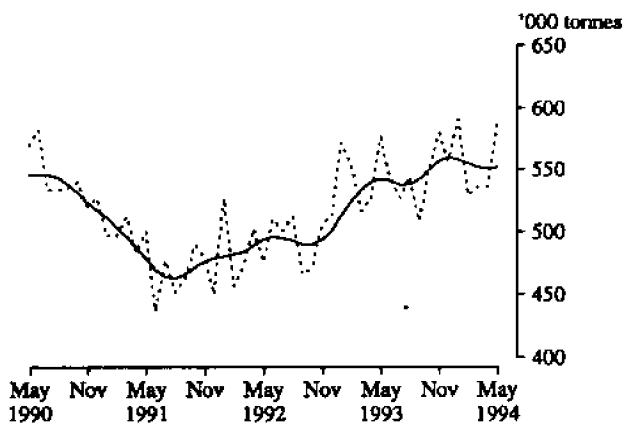
5. ELECTRICITY



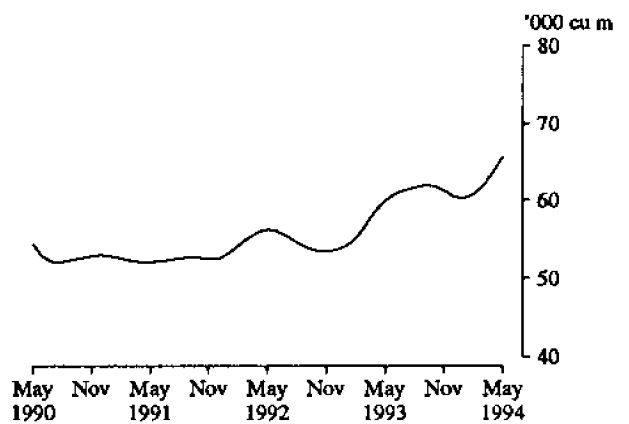
6. BRICKS, CLAY



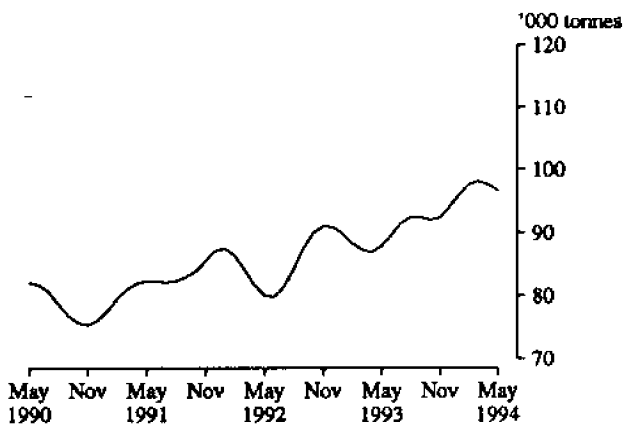
7. CEMENT, PORTLAND



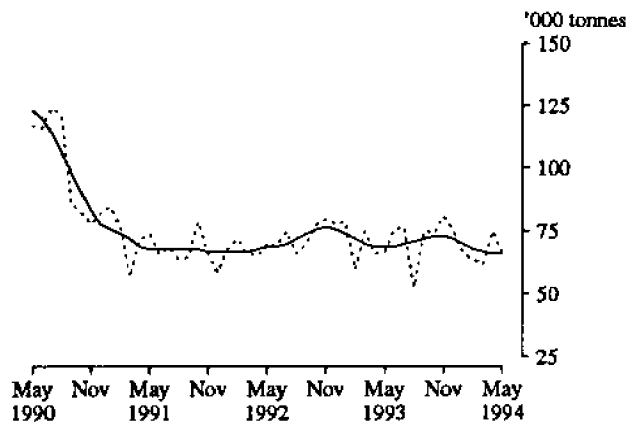
8. PARTICLE BOARD AND SIMILAR BOARD(c)



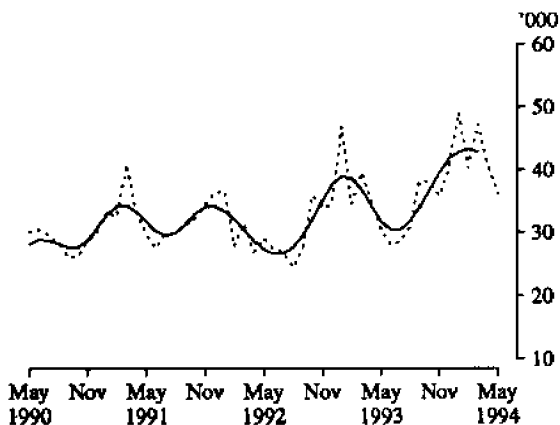
9. PLASTICS IN PRIMARY FORMS(c)



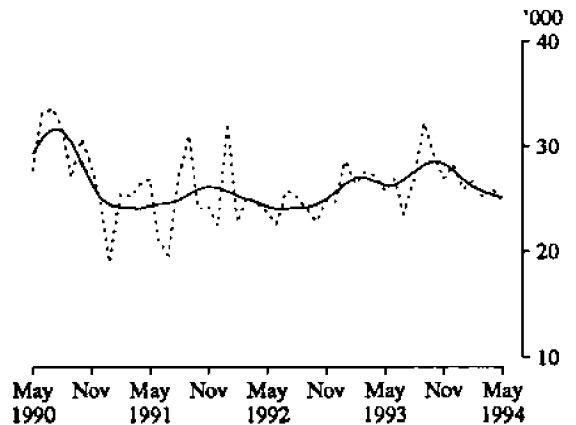
10. SULPHURIC ACID; OLEUM



11. REFRIGERATORS, DOMESTIC(d)

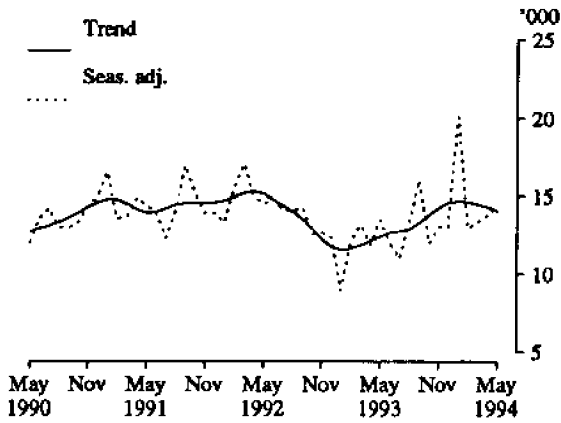


12. CLOTHES WASHING MACHINES, DOMESTIC

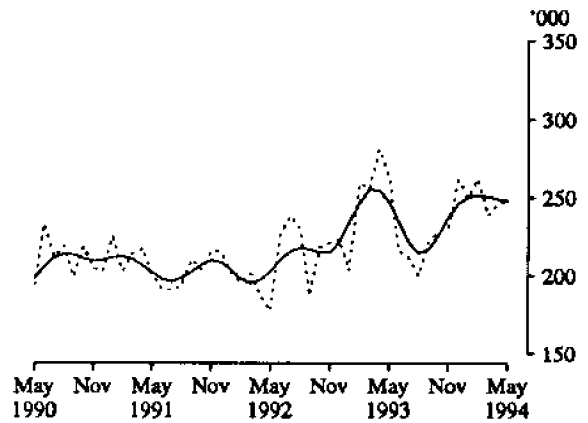


PRODUCTION STATISTICS, AUSTRALIA : TRENDS

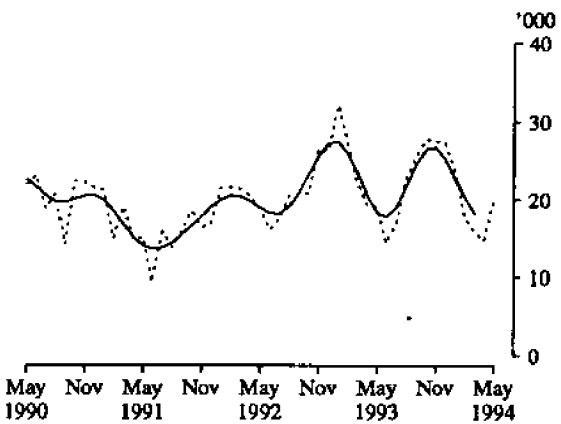
13. TELEVISION SETS



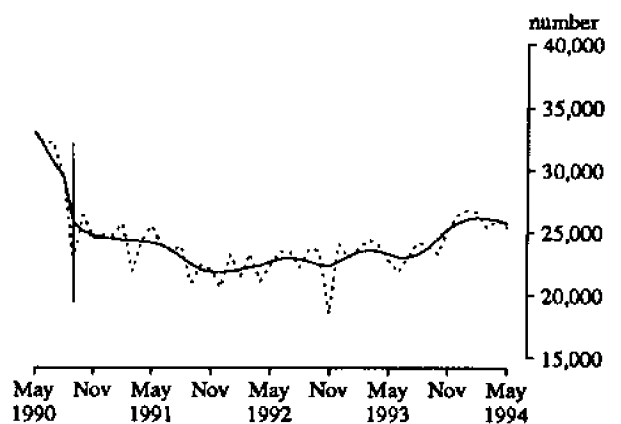
14. ELECTRIC MOTORS



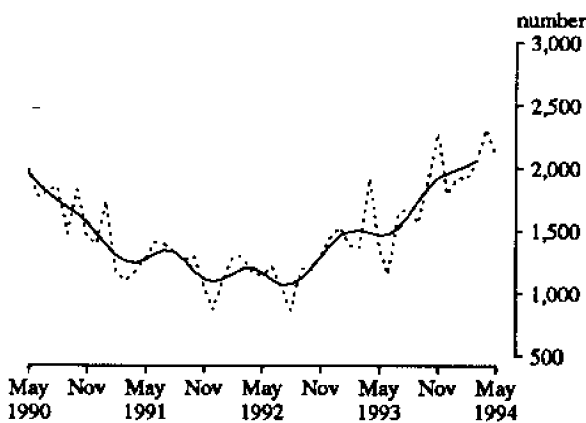
15. LAWN MOWERS, PETROL-ROTARY TYPE(d)



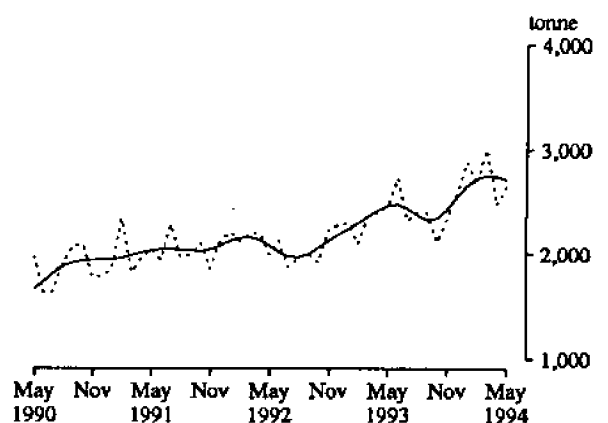
16. MOTOR VEHICLES (CARS AND STATION WAGONS)(e)



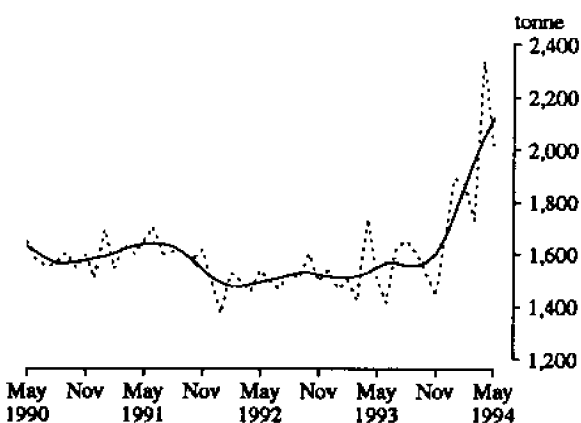
17. MOTOR VEHICLES FOR GOODS AND MATERIALS(d)



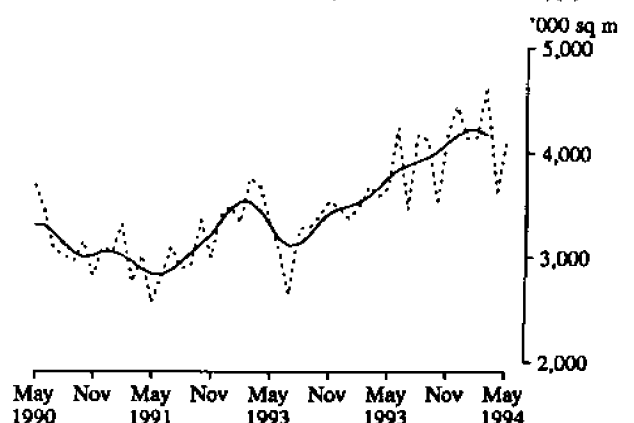
18. YARN, COTTON



19. YARN, WOOL

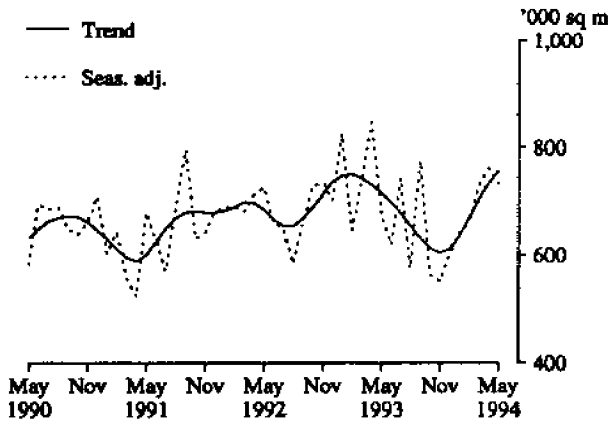


20. WOVEN FABRIC, COTTON (INCL. TOWELLING)(d)

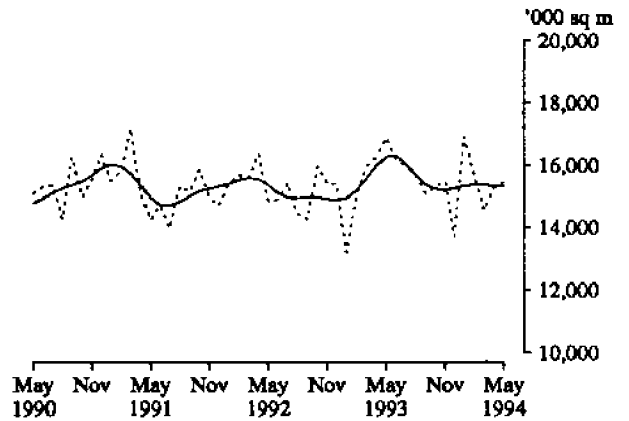


PRODUCTION STATISTICS, AUSTRALIA : TRENDS

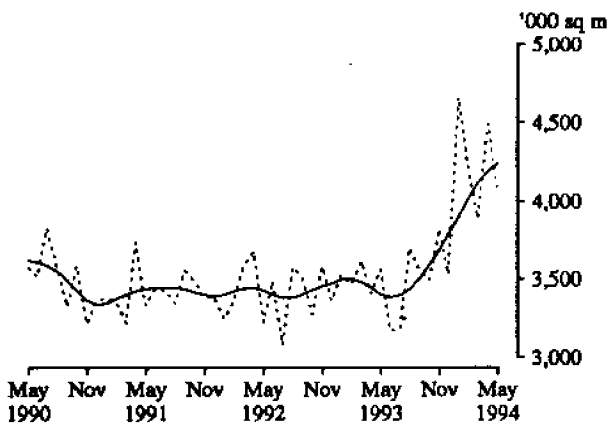
21. WOVEN FABRIC, WOOL(INCL. BLANKETING)



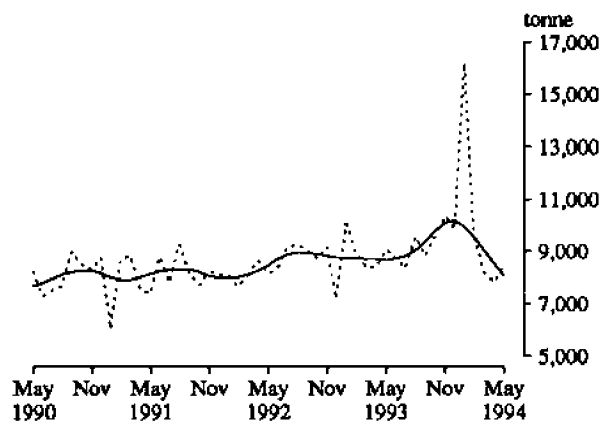
22. WOVEN FABRIC, MAN-MADE FIBRE



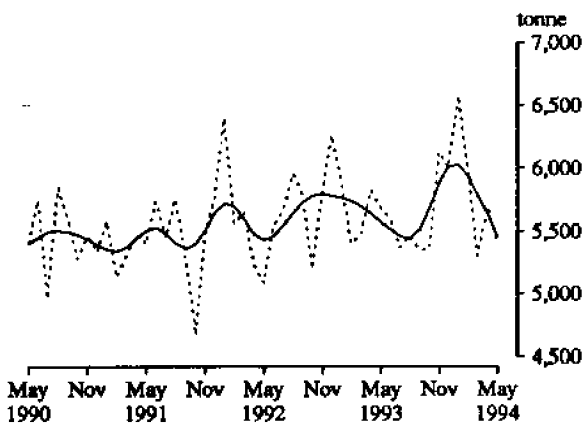
23. TEXTILE FLOOR COVERINGS



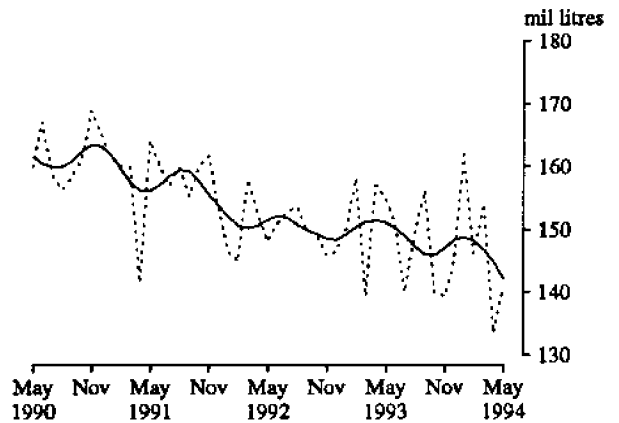
24. CONFECTIONERY, CHOCOLATE BASED



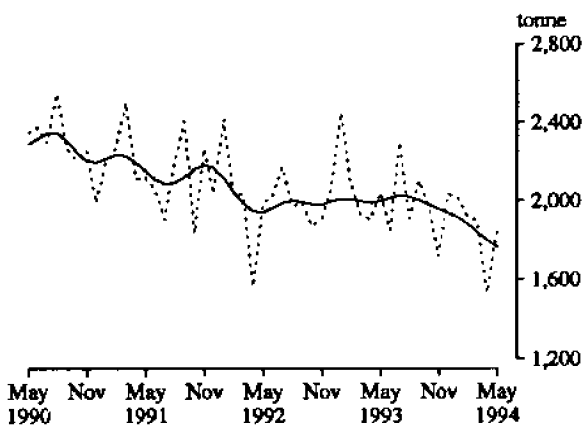
25. CONFECTIONERY, OTHER



26. BEER



27. TOBACCO AND CIGARETTES



(a) There is a drop in the level of the trend from March 1991 due to plant maintenance. (b) There is a break in the series as data after July 1991 excludes a small proportion of total production due to the withdrawal of consent for the ABS to release the information. (c) Seasonally adjusted estimates will not be published for the last two periods. (d) Trend estimates are not available for the last two periods. (e) There is

PRODUCTION STATISTICS, AUSTRALIA, MAY 1994, PRELIMINARY

No. Item	Series	Unit	Percentage changes between-											
			1993				1994					Apr. 94	May 93	
			Sept.	Oct.	Nov.	Dec.	Jan.	Feb.	Mar.	Apr.	May	Apr. 94 and May 94	May 93 and May 94	
1. Basic iron, spiegeleisen and sponge iron	Orig.	'000 tonnes	574	613	600	591	582	556	607	628	652	3.8	11.1	
	S. adj.	"	550	577	566	559	575	628	646	661	698	5.7	10.7	
	Trend r	"	557	555	561	576	594	616	640	662	683	3.1	16.0	
2. Iron and steel in ingots or other primary forms(a)	Orig.	"	625	654	638	638	613	590	647	667	681	2.1	7.1	
	S. adj.	"	597	628	645	620	607	651	661	705	722	2.4	7.9	
	Trend r	"	603	608	616	626	637	651	668	687	704	2.5	14.1	
3. Blooms and slabs(b)	Orig.	"	139	137	137	126	92	129	135	143	141	-1.4	-6.0	
	S. adj.	"	130	130	151	124	96	147	130	146	148	1.7	-6.2	
	Trend r	"	130	128	128	128	128	130	134	139	143	3.0	-7.1	
4. Gas(c)	Orig.	terajoules	51,367	48,073	46,251	43,736	39,975	40,478	47,002	46,223	55,116	19.2	9.4	
	S. adj.	"	46,719	48,320	50,423	52,309	50,195	49,924	53,310	51,396	50,834	-1.1	8.6	
	Trend r	"	47,112	48,215	49,449	50,500	51,137	51,379	51,488	51,543	51,472	-0.1	11.0	
5. Electricity	Orig.	mil kWh	13,254	13,464	13,302	13,456	13,171	12,517	13,489	12,641	13,727	8.6	-0.1	
	S. adj.	"	13,216	13,657	14,028	13,814	13,722	13,570	13,478	13,443	13,517	0.6	-0.1	
	Trend r	"	13,482	13,600	13,708	13,752	13,720	13,640	13,556	13,486	13,426	-0.4	-0.1	
6. Bricks, clay	Orig.	million	156	147	161	135	98	150	r 173	r 144	167	16.0	5.0	
	S. adj.	"	148	142	152	146	155	159	r 151	r 149	151	1.2	0.7	
	Trend r	"	149	149	149	151	152	153	153	152	151	-0.6	2.0	
7. Cement, Portland	Orig.	'000 tonnes	518	594	644	539	407	497	564	r 515	625	21.4	2.0	
	S. adj.	"	508	552	580	557	591	529	536	r 536	588	9.8	1.9	
	Trend r	"	542	550	557	560	558	555	552	551	552	0.2	1.8	
8. Particle board and similar boards(d)	Orig.	'000 cu m	67	68	69	55	32	57	67	64	70	9.4	18.6	
	S. adj.	"	n.a.	n.a.	n.a.	n.a.	n.a.	n.a.	n.a.	n.a.	n.a.	n.a.	n.a.	
	Trend r	"	62	62	61	60	60	61	62	64	66	3.2	9.5	
9. Plastics in primary forms(e)	Orig.	'000 tonnes	98.1	99.2	94.9	83.9	82.2	95.4	105.1	100.2	85.3	-14.9	-2.1	
	S. adj.	"	n.a.	n.a.	n.a.	n.a.	n.a.	n.a.	n.a.	n.a.	n.a.	n.a.	n.a.	
	Trend r	"	92.5	92.1	92.5	93.9	95.9	97.5	98.1	97.7	96.6	-1.1	9.9	
10. Sulphuric acid; oleum	Orig.	"	61	67	76	83	82	71	72	75	71	-5.3	0.0	
	S. adj.	"	75	74	81	75	66	64	62	75	66	-12.4	-2.2	
	Trend r	"	72	73	73	72	70	68	67	66	66	-0.5	-4.4	
11. Refrigerators, domestic	Orig.	'000	41.8	38.8	41.6	37.2	35.8	41.6	49.4	34.4	38.9	13.0	22.0	
	S. adj.	"	38.2	38.0	35.8	39.8	49.3	40.4	47.4	40.7	36.2	-11.1	18.5	
	Trend r	"	34.1	36.8	39.6	41.7	42.9	43.2	42.9	(f)	(f)	n.a.	n.a.	
12. Clothes washing machines, domestic	Orig.	"	34.5	29.6	29.9	25.3	11.8	26.4	29.4	24.0	25.2	4.8	0.3	
	S. adj.	"	32.3	29.1	27.0	28.3	25.9	26.7	25.1	26.0	24.7	-4.8	-3.9	
	Trend r	"	28.3	28.6	28.4	27.7	26.9	26.2	25.7	25.3	25.1	-1.0	-4.7	
13. Television sets(g)	Orig.	"	17.4	13.8	14.7	12.1	5.4	13.1	15.6	12.1	15.9	31.8	11.1	
	S. adj.	"	16.1	12.0	13.1	13.0	20.1	12.9	13.4	13.8	14.4	4.3	6.6	
	Trend r	"	13.3	13.8	14.3	14.6	14.7	14.6	14.5	14.3	14.0	-2.0	12.8	
14. Electric motors	Orig.	"	262	252	254	238	161	256	279	r 221	265	20.2	1.4	
	S. adj.	"	223	228	231	262	250	262	239	r 247	248	0.7	-5.2	
	Trend r	"	217	226	238	246	251	251	251	250	248	-0.6	0.4	

For footnotes see end of table

PRODUCTION STATISTICS, AUSTRALIA, MAY 1994, PRELIMINARY

No. Item	Series	Unit	1993				1994					Percentage changes between—	
			Sept.	Oct.	Nov.	Dec.	Jan.	Feb.	Mar.	Apr.	May	Apr. 94	May 93
												and	and
											May 94	May 94	
15. Lawn mowers petrol-rotary type	Orig.	'000	39.6	42.7	42.3	31.8	18.2	19.3	16.2	8.0	10.0	24.5	7.7
	S. adj.	"	25.6	27.8	27.6	27.4	23.9	17.8	15.9	14.7	20.3	37.8	6.5
	Trend r	"	24.6	26.5	26.8	25.3	22.8	20.3	18.3	(f)	(f)	n.a.	n.a.
Motor vehicles—													
16. Cars and station wagons	Orig.	number	26,918	24,592	27,982	21,120	11,978	26,012	29,548	21,654	28,792	33.0	15.2
	S. adj.	"	23,918	23,291	25,090	26,410	26,792	26,644	25,328	26,024	25,356	-2.6	11.5
	Trend r	"	23,795	24,510	25,216	25,753	26,077	26,197	26,131	25,984	25,720	-1.0	10.6
17. Vehicles for goods and materials(h)	Orig.	"	1,752	2,223	2,172	1,549	803	1,857	2,358	1,951	2,401	23.1	55.2
	S. adj.	"	1,557	1,901	2,287	1,794	1,924	1,914	2,066	2,316	2,088	-9.8	54.1
	Trend r	"	1,739	1,848	1,925	1,962	1,990	2,023	2,064	(f)	(f)	n.a.	n.a.
Yarn(i)—													
18. Cotton	Orig.	tonne	2,618	2,478	2,357	2,306	1,583	2,550	3,081	r 2,422	2,612	7.8	8.7
	S. adj.	"	2,386	2,116	2,332	2,568	2,883	2,672	3,011	r 2,472	2,646	7.0	6.9
	Trend r	"	2,327	2,345	2,428	2,549	2,658	2,725	2,749	2,746	2,713	-1.2	9.9
19. Wool	Orig.	"	1,798	1,617	1,694	1,421	1,113	r 1,830	r 1,894	r 1,954	2,141	9.6	42.5
	S. adj.	"	1,605	1,532	1,440	1,653	1,896	r 1,871	r 1,729	r 2,342	2,021	-13.7	34.1
	Trend r	"	1,558	1,569	1,602	1,662	1,755	1,862	1,961	2,048	2,119	3.5	36.6
Woven fabric(i)—													
20. Cotton (incl. towelling)	Orig.	'000 sq m	4,501	4,128	4,020	r 3,740	1,619	4,180	4,797	r 3,862	4,304	11.4	9.4
	S. adj.	"	4,128	3,515	4,178	r 4,445	4,143	4,157	4,630	r 3,605	4,151	15.1	12.7
	Trend r	"	3,958	4,022	4,103	4,179	4,218	4,218	4,185	(f)	(f)	n.a.	n.a.
21. Wool (incl. blanketing)	Orig.	"	806	601	652	544	369	725	832	r 636	735	15.6	14.1
	S. adj.	"	777	562	552	599	641	661	728	r 764	733	-4.0	7.9
	Trend r	"	631	613	605	611	635	669	703	735	757	3.1	5.7
22. Man-made fibre	Orig.	"	15,915	15,989	r 16,233	r 13,574	r 9,819	16,025	16,021	r 14,409	15,914	10.4	-7.5
	S. adj.	"	15,104	15,307	r 15,499	r 13,723	r 16,921	15,717	14,561	r 15,292	15,480	1.2	-8.3
	Trend r	"	15,392	15,239	15,216	15,275	15,341	15,378	15,376	15,352	15,336	-0.1	-5.8
23. Textile floor coverings	Orig.	"	3,978	3,786	4,361	3,429	2,513	r 4,059	r 4,064	3,817	4,366	14.4	16.3
	S. adj.	"	3,549	3,493	3,822	3,525	4,665	r 4,212	r 3,892	4,495	4,053	-9.8	13.7
	Trend r	"	3,508	3,591	3,687	3,793	3,902	4,017	4,117	4,194	4,240	1.1	24.6
Confectionery—													
24. Chocolate base	Orig.	tonne	9,304	10,379	10,504	9,547	8,390	r 9,405	r 9,559	r 7,419	8,757	18.0	-4.7
	S. adj.	"	8,836	9,564	10,368	9,858	16,212	r 9,526	r 8,180	r 7,820	8,436	7.9	-7.2
	Trend r	"	9,379	9,786	10,111	10,186	9,958	9,529	9,014	8,512	8,065	-5.3	-7.1
25. Other	Orig.	"	6,070	6,216	6,990	5,548	3,342	5,583	r 5,800	r 4,680	5,433	16.1	-4.5
	S. adj.	"	5,351	5,357	6,133	6,001	6,578	5,989	r 5,303	r 5,692	5,390	-5.3	-5.3
	Trend r	"	5,520	5,690	5,886	6,014	6,026	5,934	5,786	5,629	5,458	-3.1	-2.1
26. Beer(j)	Orig.	mil litres	143	151	177	184	151	134	r 164	r 126	131	4.2	-4.7
	S. adj.	"	156	140	139	145	162	146	r 154	r 134	141	5.3	-9.3
	Trend r	"	146	146	147	148	149	148	147	145	142	-1.8	-5.9
27. Tobacco and cigarettes(k)	Orig.	tonne	2,035	1,810	1,988	1,877	1,001	2,070	2,240	1,382	2,164	56.6	-6.1
	S. adj.	"	2,105	1,963	1,718	2,035	2,014	1,919	1,900	1,531	1,854	21.1	-9.2
	Trend r	"	2,001	1,978	1,957	1,937	1,915	1,882	1,839	1,797	1,763	-1.9	-11.7

(a) Includes ingots, puddled bars, pilings, blocks or lumps and steel in the molten state. (b) From rolling and forging of iron and steel (primary mills output). (c) Available for issue through mains. Includes natural gas. (d) Particle boards and similar boards of wood or other ligneous material. Includes boards for subsequent conversion to other purposes. Excludes laminated. Seasonally adjusted estimates will not be published until a longer time span of data are available to provide more reliable seasonal factors. (e) Includes liquid, paste, powder, granules, flakes, blocks, irregular shapes, lumps and similar forms. Seasonally adjusted estimates will not be published until a longer time span of data are available to provide more reliable seasonal factors. (f) See paragraph 9 of Explanatory Notes. (g) Excludes combination with radio etc. (h) Includes utilities, panel vans and prime movers for semi-trailers. (i) Includes mixtures predominantly of the fibre named. (j) Includes ale and stout. Excludes beverages with alcohol content of less than 1.15 per cent. (k) Source: Australian Tobacco Marketing Advisory Committee.

EXPLANATORY NOTES

Introduction

Preliminary estimates for May 1994 for certain major indicators of production are shown in the table on page 5. Production statistics for May 1994 for a more extensive range of commodities will be published later in the series of ten *Manufacturing Production Bulletins* (8357.0 to 8363.0 and 8367.0 to 8369.0).

Scope and coverage

2. Production statistics are not collected from single establishment manufacturing enterprises with fewer than four persons employed or from establishments predominantly engaged in non-manufacturing activities but which may carry out in a minor way some manufacturing. However, in general the contribution of these small producers to statistical aggregates is only marginal and data contained in this publication provide reliable information for the evaluation of movements in commodity production.

Comparability with other estimates

3. The ABS publishes quarterly estimates of constant price manufacturing production in the publication *Quarterly Indexes of Industrial Production, Australia* (8125.0). These estimates are shown as index numbers and are derived mainly from estimates of manufacturers' sales and stocks.

4. The production statistics published in the series of ten *Manufacturing Production Bulletins* (8357.0 to 8363.0 and 8367.0 to 8369.0) referred to in paragraph 1 account, in total, for less than half of the output of the manufacturing sector, so differences may occur between the general tendency (if there is one) in these items and changes in the quarterly indexes of industrial production. The comment applies with still greater force to the preliminary estimates for the major indicators of production shown in this publication.

Seasonally adjusted and trend estimates

5. Seasonally adjusted statistics are shown for all but two of the data items contained in this publication. In the seasonal adjustment, account has been taken not only of normal seasonal factors, but also where appropriate, of 'working day' effects (arising from the varying numbers of Sundays, Mondays, Tuesdays, etc. in the month) and the influence of Easter and Australia Day which may, in successive years, affect figures for different months. Details of the methods used in seasonally adjusting these series are available on request.

6. Seasonal adjustment procedures do not aim to remove the irregular or non-seasonal influences which may be present in any particular month, such as the effect of strikes, holiday shutdowns or other factors which vary with the prevailing demand for products. Irregular influences that are highly volatile can make it difficult to interpret the movement of the series even after seasonal adjustment.

7. The smoothing of seasonally adjusted series to create trend estimates is a means of reducing the impact of the irregular component of the series. The trend estimates have been derived by applying a 13-term Henderson weighted moving average to the seasonally adjusted series.

8. While this smoothing technique enables estimates of trend to be produced for the latest month, it does result in revisions to the estimates for the most recent months as data for subsequent months become available. Generally subsequent revisions become smaller and after 3 months

have little impact on the series. There will also be revisions as a result of revisions to the original estimates and annual reviews of seasonal and 'working day' factors.

9. Because of the highly irregular nature of some production series it is not possible to discern with reasonable confidence the current direction of the trend at the end of these series. For such highly irregular series the ABS does not provide the last two trend estimates.

10. Users may wish to refer to the ABS Information Papers *A Guide to Smoothing Time Series — Estimates of 'Trend'* (1316.0) and *Time Series Decomposition — An Overview* (1317.0) for more detailed information on smoothing of seasonally adjusted time series data.

Related publications

11. Other ABS publications which may be of interest are:

Manufacturing Production, Australia, Household Appliances and Electrical Equipment (8357.0) — issued quarterly

Manufacturing Production, Australia, Clothing and Footwear (8358.0) — issued quarterly

Manufacturing Production, Australia, Food, Drink, Tobacco, Stock and Poultry Food (8359.0) — issued quarterly

Manufacturing Production, Australia, Fibres, Yarns, Fabrics, Bedding and Floor Coverings, (8360.0) — issued quarterly

Manufacturing Production, Australia, Building Materials and Fittings (8361.0) — issued quarterly

Manufacturing Production, Australia, Plastics, Rubber, Paints, Detergents and Industrial Chemicals (8362.0) — issued quarterly

Manufacturing Production, Australia, Transport Equipment (8363.0) — issued quarterly

Manufacturing Production, Australia, Metal Products (8367.0) — issued quarterly

Manufacturing Production, Australia, Energy Products (8368.0) — issued quarterly

Manufacturing Production, Australia, Wood and Wood Products (8369.0) — issued quarterly

Manufacturing Production, Australia: Principal Commodities Produced, 1989-90 (8365.0)

Unpublished production data is also available from the ABS Sydney office. Please contact Colin Nicholson on (02) 268 4282.

12. Current publications produced by the ABS are listed in the *Catalogue of Publications and Products, Australia* (1101.0). The ABS also issues, on Tuesdays and Fridays, a *Publications Advice* (1105.0) which lists publications to be released in the next few days. The Catalogue and Publications Advice are available from any ABS office.

Symbols and other usages

n.y.a. not yet available

r figure or series revised since previous issue

n.a. not available



For more information ...

The ABS publishes a wide range of statistics and other information on Australia's economic and social conditions. Details of what is available in various publications and other products can be found in the *ABS Catalogue of Publications and Products* available at all ABS Offices (see below for contact details).

Information Consultancy Service

Information tailored to special needs of clients can be obtained from the Information Consultancy Service available at ABS Offices (see Information Inquiries below for contact details).

National Dial-a-Statistic Line

0055 86 400

(Steadycom P/L, premium rate 25¢/21.4 secs.)

This number gives 24-hour access, 365 days a year for a range of statistics.

Electronic Data Services

DISCOVERY (Key *656#): The ABS intends discontinuing its statistical information service on DISCOVERY. Please contact Peter Davidson (Phone 06 252 6684) to discuss possible alternatives for acquiring statistics or if you wish to comment on this proposal. For details on electronic data services available, contact Information Services in any of the ABS Offices (see Information Inquiries below for contact details).

Bookshops and Subscriptions

There are over 400 titles of various publications available from ABS bookshops in all ABS Offices (see below Bookshop Sales for contact details). The ABS also provides a subscription service through which nominated publications are provided by mail on a regular basis at no additional cost (telephone Publications Subscription Service toll free on 008 02 0608 Australia wide).

Sales and Inquiries

Regional Offices	Information Inquiries	Bookshop Sales
SYDNEY (02)	268 4611	268 4620
MELBOURNE (03)	615 7000	615 7829
BRISBANE (07)	222 6351	222 6350
PERTH (09)	323 5140	323 5307
ADELAIDE (08)	237 7100	237 7582
HOBART (002)	20 5800	20 5800
CANBERRA (06)	207 0326	207 0326
DARWIN (089)	43 2111	43 2111
National Office		
ACT (06)	252 6007	008 020 608

ABS Email Addresses

Keylink	STAT.INFO@ABS
X.400	(C:AU,A:TELMEMO,O:ABS,SN:INFO,FN:STAT)
Internet	STAT.INFO@ABS. TELEMEMO.AU



Information Services, ABS, PO Box 10, Belconnen ACT 2616

